

AN ISO/ TS 16949 CERTIFIED COMPANY

75 YEARS
IN YOUR SERVICE





SHBC-101
Front Spring Bracket
(Front & Rear)
TATA 312
342 322 003 /
312 322 3001



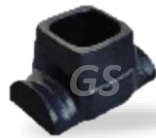
SHBC-106
Helper Bracket
TATA 312
312 325 1217



SHBC-126
Rear Spring F&R
Bracket
TATA 1312/ 1612/ SE
352 325 0101



SHBC-102
Front Spring Shackle
TATA 312
312 320 1262



SHBC-118
U-Bolt Bracket Front
TATA 1210 SE
352 332 0024 /
042 322 0024



SHBC-127
Rear Spring Shackle
TATA 1312/ 1612/ SE
352 325 0120 /
352 320 0163



SHBC-103
Rear Spring Front
Bracket
TATA 312
312 325 1701



SHBC-119
Rear U-Bolt Bracket
Without Leg
TATA 1210 SE
321 325 0931



SHBC-131
Wheel Hub Cup Front
(100X1.5p)
TATA 85 Model
X2573 3340 3703



SHBC-104
Rear Spring Rear
Bracket
TATA 312
312 325 1801



SHBC-124
Front Spring Bracket
(Front & Rear)
TATA 1312/ 1612/ SE
/ 1109
423 220 401



SHBC-133
Threaded Ring
Differential STD
Tata 1210 SE/ 1312
/ 1612
3523320024 /
042322 0024J



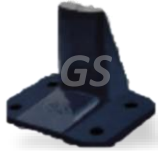
SHBC-105
Rear Spring Shackle
TATA 312
312 325 1663



SHBC-125
Front Spring Shackle
TATA 1312/ 1612/ SE
/ 1109
352 325 0020/
352 320 0063



SHBC-135
Threaded Ring Tail
Pinion STD.
Tata 1210 SE/ 1312
/ 1612
327 353 10252 0024J



SHBC-136
Helper Bracket
TATA 1312/1612/SE
2573 3240 3351



SHBC-220
Threaded Ring Tail
Pinion I O/S
Tata 1210 SE/ 1312
/ 1612
327 353 102



SHBC-367
Front Spring Shackle
(W/o Stopper)
Tata 1612 / 1312
352 325 0020 /
352 320 0063



SHBC-216
Threaded Ring
Differential I O/S
Tata 1210 SE / 1312
/ 1612
321 353 0025



SHBC-221
Threaded Ring Tail
Pinion II O/S
Tata 1210SE/ 1312
/ 1612
327 353 102



SHBC-368
Rear Spring Shackle
(W/o Stopper)
Tata 1612 / 1312
352 325 0120 /
352 320 0163



SHBC-217
Threaded Ring
Differential II O/S
Tata 1210 SE / 1312
/ 1612
321 353 0025



SHBC-222
Threaded Ring Tail
Pinion III O/S
Tata 1210SE/ 1312
/ 1612
327 353 102



SHBC-426
Center Bearing Bracket
Tata 1312/85
2573 4130 0112



SHBC-218
Threaded Ring
Differential III O/S
Tata 1210 SE / 1312
/ 1612
321 353 0025



SHBC-223
Threaded Ring Tail
Pinion IV O/S
Tata 1210SE/ 1312/
1612
327 353 102



SHBC-428
Center Bearing
Bracket (with EXTRA
STRENGTH
Tata 1510/1612



SHBC-219
Threaded Ring
Differential IV4 O/S
Tata 1210 SE / 1312
/ 1612
321 353 0025



SHBC-358
Base Plate
(BIG HOLE) 16.5MM
Tata 1612/ 1210/ SE
340 324 0335



SHBC-439
Threaded Ring Tail
Pinion V O/S
Tata 1210 SE/
1312/ 1612
327 353 1025



SHBC-440
Threaded Ring Tail
Pinion VI O/S
Tata 1210 SE/
1312/ 1612
327 353 1025



SHBC-478
REAR U-Bolt Bracket
with Leg
Tata 1210 SE
909-15



SHBC-553
Helper Bracket 6 -Hole
Tata 1612
2628 3240 3301



SHBC-444
Helper Bracket
(MODIFIED)
HEAVY DUTY
Tata 1612/1312/SE
2573 3340 3301



SHBC-483
Mounting Cup
Tata 1210 SE
3505 8901 3703



SHBC-566
Base plate
(Small Hole) 16.5mm
TATA 1312/ 1210SE/
1312/ 1612/1613
340 324 0335
/340 0435



SHBC-468
Rear Spring Bracket
Tata 1210/1516
358 325 0001



SHBC-523
Threaded Ring
Differential VII O/S
Tata 1210 SE/ 1312
/ 1612
321 353 0025



SHBC-108
Center Bearing Bracket
Tata 1210
012 414 3.001 J \\
312 413 2214



SHBC-476
Threaded Ring V O/S
Differential
Tata 1210 /SE/1312
/ 1612
321 353 0025



SHBC-524
Threaded Ring
Differential VIII O/S
Tata 1210 SE/ 1312
/ 1612
321 353 0025



SHBC-111
Base Plate (Small Hole)
Tata 1210
340 324 0335 /
340 0435



SHBC-477
Threaded Ring VI O/S
Differential
Tata 1210/SE/1312
/1612
321 353 0025



SHBC-536
Threaded Ring
Groove Type
Tata 1312/1612
2668 3530 6501



SHBC-112
Front Spring F&R Bracket
Tata 1210
042 322 0103 J



SHBC-113
Front Spring Shackle
Tata 1210
342 320 0062



SHBC-128
Helper Bracket
(Open Type)
Tata 1210
042 320 0076 J



SHBC-226
Raer Spring Shackle C.P.T
Tata 1210
342 320 0063



SHBC-114
Rear Spring Bracket
(Front &Rear)
Tata 1210
042 325 001 J /
321 325 0301



SHBC-130
Centre Bearing
Bracket (Cut Type)
Tata 1210
2573 4130 3301



SHBC-562
Bracket (RH)
Tata 1210
2060 3280 3305



SHBC-115
Rear Spring Bracket
(Front &Rear)
Tata 1210
321 325 0301 J /
042 325 0001



SHBC-134
Threaded Ring Tail
Pinion STD.
Tata 1210
312 353 1125



SHBC-563
Bracket (LH)
Tata 1210
2060 3280 3306



SHBC-116
Rear Spring Shackle
Tata 1210
342 320 0063



SHBC-224
Front Spring F&R
Bracket C.P.T
Tata 1210
042 322 0103 J



SHBC-579
Threaded Ring Tail Pinion
TATA LPT 1612/1613
2782 3250 3703 N



SHBC-117
U-Bolt Bracket Front
Tata 1210
342 331 0127



SHBC-225
Front Spring Shackle
C.P.T
Tata 1210
342 320 0062



SHBC-864
Bracket, Anti Roll Bar
MTG, LH
TATA LPO1618 BS6
4106 3280 3301



SHBC-865
Bracket, Anti Roll Bar
MTG, RH
TATA LPO1618 BS 6
4106 3280 3302



SHBC-1006
Engine MTG Arm, LH
TATA LPO 1623
2163 2420 3712



SHBC-374
Bracket Double PIN
(6 Hole-14.5mm)
Tata 2213, 2416/
2515 EX
2617 3240 3301



SHBC-980
Bracket, Engine MTG
Bottom, Rear-LH
TATA LPO1613 CNG
900FH
2776 2420 3703



SHBC-411
Front Spring Rear
Bracket (Casted)
Tata 608/709
2640 3210 0101



SHBC-375
Rear Spring Bracket Rear
(with STOPPER) 4 Hole
(14.5mm)
Tata 2213/ 2416/ 2515 EX
2617 3240 3302



SHBC-981
Bracket, Engine MTG
Bottom, Rear-RH
TATA LPO1613 CNG
900FH
2776 2420 3704



SHBC-371
Threaded Ring
Differential STD
Tata 1516/ 2213
2576 3530 6501



SHBC-390
Rear U-Bolt Bracket
Tata 1516/2213
2576 3250 3701



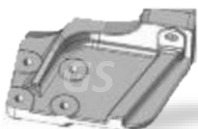
SHBC-1004
Bracket, Engine
/MTG Bottom, Rear
TATA LPO 1623
2163 2420 3710



SHBC-372
Threaded Ring Tail
Pinion STD
Tata 1516/ 2213
/2416/ 2515
2576 3530 6503



SHBC-391
Front U-Bolt Bracket
Tata 1516/ 2213
2576 3220 3701



SHBC-1005
Engine MTG Arm, RH
TATA LPO 1623
2163 2420 3711



SHBC-373
Front Spring Bracket
Tata 2213/ 2416
/2515 EX
2576 3210 3304



SHBC-392
Base Plate
Tata 1516/2213
2576 3240 3702



SHBC-393
Rear U-Bolt Bracket
Tata 2515
2060 3510 5301



SHBF427
Centre Bearing Bracket
(with EXTRA STRENGTH)
Tata 2213 / 2416
/ 2515 Ex



SHBC-528
Threaded Ring Tail
Pinion II O/S
Tata 1516 2213/2416
/2515 Ex
2576 3530 6503



SHBC-397
Front Spring Shackle
Tata 2213 /2416
/ 2515 Ex
2576 3210 3701



SHBC-474
Rear Spring Bracket
Front (6 Hole 14.5mm)
Tata 2213/2426
/ 2515 Ex
2782 3240 3301



SHBC-540
Rear Spring Bracket
Front (6 Hole 16.5mm)
Tata 2213 /2416
/ 2515 Ex
2782 3240 3304



SHBC-398
Rear Spring Bracket
Front (4 Hole 14.5mm)
Tata
2213/2416/1613/4018
2617 3240 3303



SHBC-525
Threaded Ring
Differential I O/S
Tata 1516/2213/2416
/2515 Ex



SHBC-541
Rear Spring Bracket
Double Pin
(6 hole 16.5mm)
Tata 2213 /2416
/ 2515 Ex
2782 3240 3302



SHBC-399
Bell Crank Lever
Tata 2213/ 2416
/ 2515 Ex
2573 2680 0116



SHBC-526
Threaded Ring
Differential II O/S
Tata 1516/2213/2416
/ 2515 Ex
2576 3530 6501



SHBC-542
Rear Spring Bracket
(4 Hole 16.5mm)
With Stopper
Tata 2213/2416
/ 2515 Ex
2783 3240 3303



SHBF-400
Shackle H Type
(Old Model)
Tata 2213/ 2416
/ 2515 Ex
2782 3240 918



SHBC-527
Threaded Ring Tail
Pinion I O/S
Tata 1516 / 2213/2416
/ 2515 Ex
2576 3530 6503



SHBC-549
Rear Spring Rear
Bracket
(6 Hole 14.5mm)
With Stopper
Tata 2213/2416/
2515 Ex



SHBC-578
Rear U. Bolt Bracket
(For Forged U-bolt)
Tata 2515/ 1613
2782 3250 3702 N



SHBC-915
BOGGIE HELPER O/M
TATA2523 BOOGIE



SHBC-620
Bracket Shock Absorber
Mounting (RH)
TATA 3128/2528
/ MoTippers
5019 3230 3304



SHBC-646
Threaded Ring
Differential Std. (New)
Tata 1516/2213/2416
2576 3530 6501



NPN-2001
Rear U Bolt
Bracket O/M
TATA BOOGIE



SHBC-650
CAP Suspension
Bracket (LH)
TATA Prima Tipper/
Tractor MO
2816 8910 3703



SHBF-649
Balance Rod One Side
Cotter Pin Hole
Tata 2515EX



SHBC-617
Bracket Shock Absorber
Mounting (LH)
TATA 3128/ 2528/
MoTippers
5017 3230 3301



SHBC-651
CAP Suspension
Bracket (RH)
TATA Prima Tipper/
Tractor MO
2816 8910 3704



SHBC-661
Wheel Hub Rear
Dummy Axle (Unequal
Bearing)
Tata 2515



SHBC-618
Bracket Shock Absorber
Mounting (RH)
TATA 3128/2528
/ MoTippers
5017 3230 3302



SHBC-652
Pivot Arm Bracket
LH (casting)
TATA Prima Tipper
/ Tractor MO
2816 8910 3714



SHBC-998
Rear Spring Bracket
Front (4 Hole 16.5mm)
Tata 2515 BS6
2617 3240 3303



SHBC-619
Bracket Shock Absorber
Mounting (LH)
TATA 3128/2528
/ MoTippers
5018 3230 3303



SHBC-653
Pivot Arm Bracket
RH (Casting)
TATA Prima Tipper/
Tractor MO
2816 8910 3715



SHBC-654
Bracket Anti Roller Bar
Top Mounting
Tata 3128/ 2528
/ Mo Tippers



SHBC-855
SIDE CHECK NUT I O/S
TATA 3718 BS6



SHBC-964
Shackle LH for
First Axle
TATA 3718 BS6
5039 3210 0114



SHBC942
Bracket GSL
TATA Prime Tipper FL
5006 3210 3709



SHBC897
Front Spring
H Shackle
TATA 3718 BS6



SHBC965
Shackle RH for
Second Axle
TATA 3718 BS6
5039 3210 0116



SHBC-626
Front Spring Shackle
TATA 3718 BS6
2885 3240 0103



SHBC-933
Middle Hanger LH of
Front Axle N/M 8 Hole
TATA 3718 BS6
5039 3210 3314



SHBC-966
Shackle LH for
Second Axle
TATA 3718 BS6
5039 3210 0117



SHBC-838
Rear Spring H
Shackle New Model
TATA 3718 BS6



SHBC-934
Middle Hanger RH of
Front Axle N/M 8 Hole
TATA 3718 BS6
5039 3210 3313



NPN-2002
Front Hanger of
Front Axle
TATA 3718 BS6
5039 3210 3304



SHBC-854
Side Check Nut Std.
TATA 3718 BS6



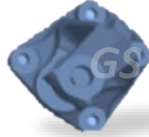
SHBC-963
Shackle RH for
First Axle
TATA 3718 BS6
5039 3210 0115



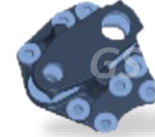
NPN-2003
Middle Hanger RH
of Front Axle OM
TATA 3718 BS6
5013 3210 0102



NPN-2004
Middle Hanger LH of
Front Axle OM
TATA 3718 BS6
5013 3210 0103



SHBC-925
Bracket, Spring Hanger
TATA LPS 4623
257632403311N



SHBC-936
Bracket Spring Hanger
Middle-RH (8- Hole)
TATA LPT 4923
5066 3240 3311



NPN-2005
Axle Seat Bracket
TATA 3718 BS6



SHBC-930
Rear Spring Rear
Bracket -LH (7-Hole)
TATA LPT 4923
5066 3240 3312



SHBC-945
Assy Spring Hanger Bkt.
Front RWD
TATA LPK 3118
5013 3210 0104



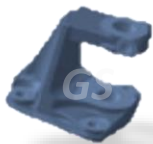
NPN-2006
Axle Bracket
TATA 3718 BS6



SHBC-931
Rear Spring Rear
Bracket-RH (7-Hole)
TATA LPT 4923
5066 3240 3313



SHBC-948
Rear Spring Front
Hanger 6-Hole
TATA LPT 4923
5066 3240 3314



SHBC866
Bracket, Spring Hanger
TATA LPT 1918
503332403302N



SHBC-932
Front Spring Bracket
with Bush
TATA 4923
5039 3210 0180



SHBC-1001
Bracket-S/ABS, LWR-LH
TATA LPS 4027/LPS 4934
2885 3230 3306



SHBC-914
Boggie Helper Thread
Type
TATA LPK 2523
288032403751



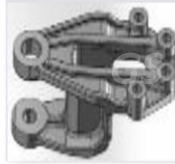
SHBC935
Bracket Spring Hanger
Middle-LH (8- Hole)
TATA LPT 4923
5066 3240 3310



SHBC-1002
Bracket-S/ABS, LWR-RH
TATA LPS 4027/LPS 4934
2885 3230 3307



SHBC-1003
Bracket, Articulation
Stopper
TATA LPS4923
5011 3240 3757



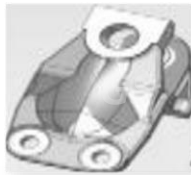
SHBC-988
Bracket, Front
Spring Hanger
TATA LPT 715 4X4
2198 3210 3707



SHBC-943
H-SHACKLE
TATA SIGNA 4223.T
5084 3240 3702



SHBC-959
Bracket, Rear Spring
Hanger, Front
TATA LPT2818
2846 3240 3715



SHBC-995
Bracket, Front
Spring Hanger
TATA LPT 1615
2754 3210 3701



SHBC-944
YOKE Balance Rod
TATA SIGNA 4223.T
5084 3240 3703



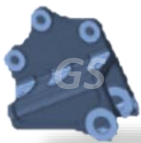
SHBC-960
Bracket, Spring
Hanger, RH
TATA LPT2818
5085 3210 3302



SHBC-900
Bell Crank
Big Hole 50mm
TATA Signa



SHBC-946
Rear Spring Rear
Bracket 6-Hole- LH
TATA SIGNA 4223.T
5084 3240 3302



SHBC-961
Bracket, Spring
Hanger, RH
TATA LPT2818
5085 3210 3303



SHBC922
Rear Spring Rear
Bracket 6-hole
TATA SIGNA 4223.T
5084 3240 3304



SHBC-947
Rear Spring Rear
Bracket 6-Hole- RH
TATA SIGNA 4223.T
508432403303



SHBC-987
Bracket, Rear Spring
Hanger
TATA LPTA 715
2198 3240 3703



SHBC-941
Rear Spring Front
Bracket 6-Hole
TATA SIGNA 4223.T
5084 3240 3301



SHBC-955
BRACKET.SPRING
HANGER.REAR-MIDDLE
TATA SIGNA 3023.T
518132403301



SHBC-957
Bracket, Spring Hanger,
Rear-LH
TATA SIGNA 3023.T
5181 3240 3302



SHBF-266
Front Spring Rear
Hanger
Tata 407
2651 3210 0113



SHBC-271
Centre Bearing Bracket
(Casted)
Tata 407
2651 4130 0101



SHBC-958
Bracket, Spring Hanger,
Rear-LH
TATA SIGNA 3023.T
5181 3240 3303



SHBF-267
Front Spring Shackle
"H" Type
Tata 407 O/M
2651 3210 0118



SHBF-292
Rear Spring Front
hanger (LH)
Tata 407
2651 3240 0130



SHBC-1007
Support Bracket, RH
TATA SIGNA2830.TK
5158 3120 3301



SHBF-268
Rear Spring Rear
Hanger (LH)
Tata 407
2651 3240 0136



SHBF-293
Rear Spring Front
hanger (RH)
Tata 407
2651 3240 0132



SHBC-1008
Support Bracket, LH
TATA SIGNA2830.TK
5158 3120 3302



SHBF-269
Rear Spring Rear
Hanger (RH)
TATA 407 O/M
2651 3240 0137



SHBC-326
Threaded Ring Tail
Pinion STD
Tata 407
2651 3530 6501



SHBC-228
Threaded Ring
Differential STD
Tata 407
2651 3530 6502



SHBC-270
Rear Spring Rear
Shackle (Casted)
Tata 407 O/M
2651 3240 0138



SHBC-363
Rear U-Bolt Bracket
Tata 407
2661 3250 3701



SHBF-376
Rear Spring Rear Hanger
(LH) With Bush
Tata 407 (NEW MODEL)
2651 3240 0136



SHBF441
Front Spring Shackle
H-Type
Tata 407



NPN-2008
Rear Spg. Front Hanger
RH Single Plate
TATA 407 TURBO



SHBF-377
Rear Spring Rear
Hanger (RH) With Bush
Tata 407 (NEW MODEL)



SHBC-640
Threaded Ring
Tail Pinion
Tata 407 Twin Tyre
2665 3530 6503



NPN-2009
Rear Spg. Rear Hanger
with Bush LH
TATA 407 TURBO



SHBF-389
Rear Spring Shackle
"H TYPE"
Tata 407 (NEW MODEL)



SHBC-641
Threaded Ring
Differential
Tata 407 Twin Tyre
2665 3550 6502



NPN-2010
Rear Spg. Rear Hanger
with Bush RH
TATA 407 TURBO



SHBC-412
Front Spring Front
Bracket (RH) (CASTED)
Tata 407
2651 3210 0124



SHBC-664
Wheel Hub with Break
Drum
Tata 407



NPN-2011
RR Hanger BS 4 RH
TATA 407 TURBO



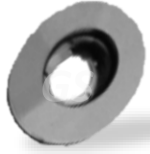
SHBC-413
Front Spring Front
Bracket (LH) (CASTED)
Tata 407
2651 3210 0123



NPN-2007
Rear Spg. Front Hanger
LH Single Plate
TATA 407 TURBO



NPN-2012
RR Hanger BS 4 LH
TATA 407 TURBO



SHBC-668
Front Brake Disc
ventilated
Tata 207
2826 4210 3701



SHBF-414
Front Spring
Front Hanger
Tata 609/709



SHBC-571
Rear Spring Bracket
Tata1109
2604 3240 3701



SHBC-349
Assy. Support Bracket
Tata 608/709
2574 4270 0147



SHBC-535
Threaded Ring
Groove Type
Tata 608
2661 3530 6506



SHBC-612
Bracket (Anti Roll
Mounting)
TATA 4028/4928
/ Mo tractor
2885 3280 3304



SHBC-350
Front Spring Shackle
Tata 608/709
2640 3210 0105



NPN-2013
FF Hanger Steel N/M
Small Kan
TATA 609/709



SHBC-613
Front Spring
Front Bracket
TATA 4028/4928
/ Mo tractor
2885 3210 3303



SHBC-351
Rear Spring Shackle
Tata 608/709
2640 3210 0105



SHBC-570
Rear Spring Shackle
Tata 1109
2604 3250 3701



SHBC-614
Front Spring
Bracket (LH)
TATA 4028/ 4928/ Mo
Tractors
2885 3210 3305



SHBC-571
Rear Spring Bracket
Tata1109
2604 3240 3701



SHBC-615
Front Spring
Bracket (RH)
TATA 4028/ 4928/ Mo
Tractors
2885 3210 3306



SHBC616
Bracket Anti Roll B
TATA 4028/ 4928/ Mo
Tractors
5009 3280 3301



SHBC600
Front Spring Hanger
Front Bracket Top
Tata Wevler
2778 3210 3702 (RH)



SHBC601
Rear Spring Front &
Rear Top (LH)
Tata Wevler
2778 3240 3707 (LH)



SHBC602
Rear Spring Front &
Rear Top (RH)
Tata Wevler
2778 3240 3708 (RH)



SHBC625
Rear Spring Shackle
TATA 4028/ 4928/ Mo
Tractors
2885 3210 0103



SHBC-137
Front Spring Rear Bkt.
Leyland
F043 4322 / 274112 /
AL-3960/F0438022



SHBC-142
Helper Bracket (CASTED)
Leyland Tusker
B1011602/ 274275



SHBC-423
Rear Bracket (RH)
LEYLAND 709
F 710 7822



SHBC-138
Rear Spring Bracket O/M
Leyland 370 O/M
272747 / F0400 622
/ 554239 / AL-3963



SHBC-290
Rear Spring Bracket
F & R (Modified)
Leyland Tusker (latest)
F710 1222



SHBC-429
Center Bearing Housing
LEYLAND
F1335022



SHBC-139
Front Spring Bracket
Front (Fish Type)
Leyland
F0437922 / F0435 222
/AL-8280 / AL1107



SHBC-418
Rear Spring Bkt. (LH)
LEYLAND IVECO 909/70
F 711 3922



SHBC-438
Engine Mounting
LEYLAND
B1011603 / F7102222



SHBC-140
Spring Shackle Front &
Rear
Leyland
272 895/ F320 11



SHBC-419
Rear Spring Bkt. (RH)
LEYLAND IVECO 909/70
F 711 3822



SHBC-447
Clutch Withdrawal
Plate Without Facing
LEYLAND



SHBC-141
Helper Bracket
(CASTED) Open Type
Leyland 3710 O/M 3516
274 275 / F0430014



SHBC-422
Rear Bracket (LH)
LEYLAND 709
F 710 7722



SHBC-458
Rear Spring Front
Bracket (4 Hole)
LEYLAND 2214/2516
X 04 052 22



SHBC-459
Rear Spring Bracket
Centre (Double Pin)
LEYLAND 2214 /2516
TAURUS
X 04 045 22



SHBC-503
Rear Spring Front
Bracket (6 Hole)
Leyland 2214 / 2516
F 040 3222



SHBC-662
Wheel hub Rear
Leyland



SHBC-460
Rear Spring Rear Bracket
(with Stopper)
LEYLAND 2214 /2516
TAURUS
X 04 046 22



SHBC-593
Rear Spring Bracket
(Frt &Rr) Tata Type
Leyland



SHBC-689
R/S Hanger (35 mm)
4 Hole U-Truck OM
14.5mm
Ashok Leyland U-TRUCK
X7100722



SHBC-461
Bell Crank Lever
LEYLAND 2214 /2516
TAURUS
B 3295 401/ X 2405110



SHBC-637
Front Spring
Bracket Rear
Ashok Leyland
F0434322



SHBC-776
Rear Hanger (42mm)
4 Hole U-Truck 14.5mm
Ashok Leyland U-TRUCK
X7100922



SHBC-462
Rear Spring
" H-TYPE " Shackle
LEYLAND 2214 /2516
TAURUS
X 32 001 22



SHBC-638
Rear spring Bracket
Ashok Leyland
F7101222



SHBC-777
Double Pin Hanger
U-Truck O/M 14.5mm
Ashok Leyland U-TRUCK
X7100322



SHBC-481
Rear Spring
Front Bracket
Leyland 2516 Taurus
F 0435 022



SHBC-639
Front Spring Front
Bracket (Fish Type)
Ashok Leyland
F0437922



SHBC-876
Rear Hanger 42mm 4
Hole U-Truck 16.5mm
Ashok Leyland U-TRUCK
X7100922



SHBC-877
Double Pin Hanger
U-Truck O/M 16.5mm
Ashok Leyland U-TRUCK
X7100322



SHBC-919
R/S Rear Hanger U Truck
N/M Heavy Duty
Ashok Leyland U-TRUCK
F7L12022



SHBC-967
Rear Spring Front and
Rear Bracket
LEYLANDGURU 1111
F7L00312



SHBC-878
R/S Hanger 35 mm 4
Hole U Truck O/M
16.5mm
Ashok Leyland U-TRUCK
X7100722



SHBC-920
Front Spring Rear Hanger
U-Truck
Ashok Leyland U-TRUCK



SHBC-971
Helper Bracket
LEYLAND BS4



SHBC-898
Bell Crank U Truck
Ashok Leyland U-TRUCK
X3200622



SHBC-921
Front Spring Middle
Hanger U-Truck
Ashok Leyland U-TRUCK
F3E00522



SHBC-972
Rear Spring Front Bkt.
LEYLAND BS6
F7L10022



SHBC-901
Front Spring H
Shackle U-Truck
Ashok Leyland U-TRUCK
F3200122



SHBC-924
Bell Crank U-Truck Small
Ashok Leyland U-TRUCK
X240251



SHBC-973
Double Pin Hanger RH
LEYLAND BS6
MB336002



SHBC-916
Spring Seat/
Helper Bracket OM
Ashok Leyland BOOGIE
FZY00122



SHBC-967
Rear Hanger Guru 1111
25.4mm Bore
LEYLAND GURU 1111
F7L00312



SHBC-974
Double Pin Hanger LH
LEYLAND BS6
MB336001



SHBC-975
Rear Spring Rear
Bracket RH
LEYLAND BS6
MB336004



SHBC-990
Rear U Bolt Bracket
LEYLAND BS6
X2S00221



NPN-2017
F/S Front Hanger
E-Comet Stag NM
Ashok Leyland
F-7108222



SHBC-976
Rear Spring Rear
Bracket LH
LEYLAND BS6
MB336003



SHBC-991
Front Spring Shackle
LEYLAND BS6
MB322001



NPN-2018
Helper Bracket
F3H01922



SHBC-977
Rear Hanger 1111
22mm Bore
LEYLAND GURU 1111
F7L00312



NPN-2014
R/S Bracket Chital/
Ecomet 12.7 mm Holes
Ashok Leyland
F-7103272



NPN-2019
Front Leaf Spring Bed
Ashok Leyland U-TRUCK
FR7055922



SHBC979
Double Pin Hanger
U-Truck N/M
Ashok Leyland U-TRUCK
F7L07022



NPN-2015
R/S Front Helper
Bracket E-Comet
Ashok Leyland
7110422



NPN-2020
Rear U Bolt Bracket
Ashok Leyland Boggie
F4R00122



SHBC-989
Front U Bolt Bracket
Full Round
LEYLAND BS6
MB323002



NPN-2016
F/S Rear Hanger
E-Comet Stag NM
Ashok Leyland
X-0402522



NPN-2021
Spring Seat/ Helper
Bracket N/M
Ashok Leyland Boggie



NPN-2022
Wear Pad for
Spring Seat NM
Ashok Leyland Boggie



NPN-2027
Helper Bracket 1618
BS4/1613
Ashok Leyland BS4
F2Y001221613 / 1618



NPN-2032
Shackle for 1618/ 12-
Meter 35mm
Ashok Leyland 12 METER
F32100122



NPN-2023
Front Spring Front
Hanger U-Truck
Ashok Leyland U-
TRUCK



NPN-2028
Rear Spring Bracket
1618/12 Meter Bus
Ashok Leyland 12 Meter
F-7120122, 1613, 1618



NPN-2033
RR Shackle for Leyland
Guru 1111 25mm Bore
Single Cotter Pin
Ashok Leyland GURU
B6X02503



NPN-2024
Helper Bracket
Ashok Leyland 3516



NPN-2029
Helper Bracket 1616
N/ Model Tipper
Ashok Leyland
F2Y00422 1616 Tipper



SHBC-985
Bracket, Spring Hanger,
Front
SAK1212 RDE
2097 3210 3701



NPN-2025
Rear Spring Front
Hanger U Truck NM
Ashok Leyland U-TRUCK



NPN-2030
Rear Spring Front
Hanger Leyland
Leyland Boss



SHBC-986
Bracket, Spring Hanger,
Front
SAK1212 RDE
2097 3210 3702



NPN-2026
R/S Rear Helper Bracket
E-Comet Long Type
Ashok Leyland e-comet
F711511252, 2518,
3718 U Truck



NPN-2031
RR Shackle for Guru
1111 (22 mm Bore
Single Cotter Pin)
Ashok Leyland GURU
B3118702



SHBC-983
Clamp, Anti Roll Bar MTG
9/12 EV BUS
5023 3230 3301



SHBC-984
Bracket, Shock
Absorber MTG Front
9/12 EV BUS
5023 3230 3301



SHBF-1111
Rear Spring Front
Hanger Single
Support (LH)
Mahindra MAXX



NPN-2037
Rear Spring Front
Hanger 35 mm
Mahindra & Mahindra
DAP000070



SHBF-1102
Shackle FD 150
with Bush
Mahindra Jeep F.C 150



SHBF-1112
Rear Support Front
Hanger Single
Support (RH)
Mahindra MAXX



NPN-2038
Front Spring Front
Hanger
Mahindra & Mahindra



SHBF-1104
Front spring
Front Hanger
Mahindra Pick UP



NPN-2034
Rear Spg. Middle
Hanger Double Pin
Mahindra & Mahindra
DAP000080



NPN-2039
Front Spring Rear
Hanger with Bush
Mahindra & Mahindra



SHBF-1109
Front Spring Rear
hanger (LH)
Mahindra Pick UP



NPN-2035
Bell Crank
Mahindra & Mahindra
740200310



NPN-2040
Rear Spring 35mm
NM Tipper
Mahindra & Mahindra
M1300102



SHBF-1110
Front Spring Rear
Hanger (RH)
Mahindra Pick UP



NPN-2036
Rear Spring Rear
Hanger 42mm
Mahindra & Mahindra
DAP000090



NPN-2041
Bottom Wear Pad
Mahindra & Mahindra



NPN-2042
Spring Seat
Mahindra & Mahindra

GS

GS

GS

GS

GS

GS

GS

GS

GS

GS

GS

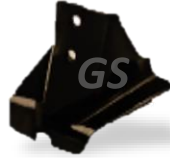
GS

GS

GS



SHBC-241
Threaded Ring
Screw Adjuster Diff.
Swaraj Mazda
W 0012 7301



SHBF-1051
Front Spring Hange
Swaraj Mazda



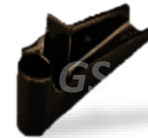
SHBF-1056
Front Spring
Front Hanger (LH)
Swaraj Mazda



SHBC-242
Hinge Front (LH)
Swaraj Mazda
LP 0236121



SHBF-1052
Rear Helper Bracket
Swaraj Mazda



SHBF-1057
Front Spring
Front Hanger (RH)
Swaraj Mazda



SHBC-243
Hinge Front (RH)
Swaraj Mazda
LP 023 6111



SHBF-1053
Front Spring
Hanger Bracket
Swaraj Mazda



SHBF-1058
Front Shackle O/M
Swaraj Mazda



SHBC-244
Bracket Alternator
Swaraj Mazda
SL 0118371



SHBF-1054
Rear Spring Front
Hanger (LH)
Swaraj Mazda



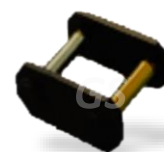
SHBF-1059
Rear Shackle O/M
Swaraj Mazda



SHBF-1011
Rear Helper Bracket
Model
Swaraj Mazda



SHBF-1055
Rear Spring
Hanger (RH)
Swaraj Mazda



SHBF-1060
Front Shackle
New Model
Swaraj Mazda



SHBF-1061
Front Shackle New
Model
Swaraj Mazda



SHBF-1062
Rear Spring Rear
Hanger New Model
Swaraj Mazda



SHBC679
Plate Leaf Spring
Boogie
AMW
417-01-034



SHBC680
Side Wear Pad Bogie
AMW
426 20 0031



SHBC681
Rear Spg. Bracket 4 Hole
AMW
127-30-0421



SHBC682
Front Spring Shackle
AMW
193-01-0000



SHBC-463
Rear Spring Shackle
MAN
PF 81.41.303.0001



SHBC-672
Front Spring Bracket
MAN 25.2000/40.200
244 130 10002



SHBC-675
Rear U-Bolt Bracket
MAN 25.220
644 133 50002



SHBC-464
Spring Shackle
MAN
814,413,036,028



SHBC-673
Front Spring Rear Bkt.
MAN 25.2000/40.200
644 130 76001



SHBC-676
Spacer Above Front
Leaf Spring
MAN 25.220
MAN 25.220/40.220



SHBC-671
Helper Bracket
MAN 40.220
644 130 70002



SHBC-674
H-Shackle
MAN 25.2000/40.200
644 130 3001



SHBC-677
Spacer Above Front
Leaf Spring
MAN 25.220
644 371 80001

GS

GS

GS

GS

GS

GS



SHBC-576
Front Helper Bracket
MAZDA T3500 SML
LP 0138171



SHBC-577
Rear Helper Bracket
MAZDA T3500 SML
LP 0138172

GS

GS

GS

GS

GS

GS

GS

GS

GS

GS

GS

GS



GSLR-101
Link Rod Adjustable
(375mm)
Trailer



SHBC-584
Equalizer With Bush
(Casted)
Trailer



SHBC-589
Front Bracket RH
(Casted)
Trailer



GSLR-201
Link Rod Fixed
(375mm)
Trailer



SHBC-585
Centre Bracket (Casted)
Trailer



SHBC-598
Rear Hub
Trailer Axle



GSLR-301
Link Rod Fixed (500mm)
Trailer



SHBC-586
Front Bracket LH
(Casted)
Trailer



GSLR-401
Link Rod Adjustable Long
Trailer



SHBC-587
Rear Bracket Rear
Bracket (Casted)
Trailer



SHBC-608
Engine Bracket
Fiat
11059 002



SHBC-609
Engine Bracket
Fiat
11059 S1 002



SHBC610
Engine Bracket
Fiat
11059 S2 002

GS

GS

GS

GS

GS

GS

GS

GS

GS

GS

GS

GS



SHBC-642
Threaded Ring
135X1.5
HDT- Bharat Benz
A 973 353 0025



SHBC-648
Base (RH)
HDT- Bharat Benz
A 400 323 0984



NPN-2043
Shackle LH First Axle
Bharat Benz 3128
949 322 1979



SHBC-643
Threaded Ring 155X1.5P
HDT- Bharat Benz
970 353 0025



SHBC-918
Rear U Bolt Bracket
Bharat Benz 3128,
2523, 2528



NPN-2044
Shackle LH First Axle
Bharat Benz 3128
949 322 1979



SHBC644
Threaded Ring 175X1.5P
HDT- Bharat Benz
A 973 353 0125



SHBC-937
Rear Spring Front
Hanger
Bharat Benz 1623, 3723,
3123, 2823, 4223, 4023



NPN-2045
Shackle LH Second Axle
Bharat Benz 3128
949 322 1679



SHBC-645
Threaded Ring 185X1.5P
HDT- Bharat Benz
A 948 353 0025



SHBC-938
Rear Spring Rear Hanger
Bharat Benz 3723, 3123,
2823, 4223
4003280003



NPN-2046
Shackle RH Second Axle
Bharat Benz 3128
949 322 1779



SHBC-647
Base (LH)
HDT- Bharat Benz
A 400 323 0884



SHBC-950
Equalizer Wear Pad
Bharat Benz 3723,
3123, 2823, 4223



NPN-2047
Front Spring U Bolt
Bracket
Bharat Benz 1623, 3723,
3123, 2823, 4223, 4023
4003310226



NPN-2048
Equalizer with Brass
Bush Single Bend
Bharat Benz 3723, 3123,
2823, 4233



NPN-2053
F/S Front Hanger RH
Bharat Benz 1414,
1214, 1217, 1014, 914



NPN-2058
Spring Seat Centre
Hole Height RH
Bharat Benz 3128,
2523, 2530
6253250321



NPN-2049
Rear Spring Shackle
(30mm Pin)
Bharat Benz 1617



NPN-2054
Rear Spring Front
Hanger
Bharat Benz 1414,
1217, 1214, 1014, 914



NPN-2059
Spring Seat Cross
Type LH
Bharat Benz 3128,
2523, 2528
A4003250019



NPN-2050
Rear Spring Shackle
(28 mm Pin)
Bharat Benz 1414,
1217, 1214, 1014,
914



NPN-2055
Rear Spring Rear
Hanger
Bharat Benz 1414,
1217, 1214, 1014, 914



NPN-2060
Spring Seat Cross
Type RH
Bharat Benz 3128,
2523, 2528
A4003250119



NPN-2051
Front H Shackle
Bharat Benz 1414, 1217,
1214, 1014, 914



NPN-2056
R/S Rear Helper
Bracket
Bharat Benz 1414,
1217, 1214, 1014, 914



NPN-2061
Rear Spring Rear
Helper Bracket
Bharat Benz 1623,
4023



NPN-2052
F/S Front Hanger LH
Bharat Benz 1414,
1217, 1214, 1014, 915



NPN-2057
Spring Seat Centre
Hole Height LH
Bharat Benz 3128,
2523, 2528
6253250219



NPN-2062
Bharat Benz 3723,
123, 2833, 4223
Middle Hanger for
Equalizer



NPN-2063
Hanger for Second
Axle RH
Bharat Benz 3128
A4003201643



NPN-2064
Hanger for Second
Axle LH
Bharat Benz 3128
A4003201643

GS

GS

GS

GS

GS

GS

GS

GS

GS

GS

GS

GS

GS



SHBC-352
Rear Spring Hanger
F&R (Casted)
Eicher Canter
MB200 840/200863



SHBC-706
Front Helper Bracket
EICHER E2-PLUS
IA234072



SHBC-713
Front Spring Front Bkt.
Eicher E-11.10
IA207966



SHBF-443
Rear Spring Shackle
Eicher Canter
MB 035 279



SHBC-707
Rear Helper Bracket
EICHER E2-PLUS
IA234073



SHBC-712
F/S Front Bracket
Eicher Galaxy
30.25/33.25, Jumbo 20.16
IA204891



SHBC-558
Bracket Rear Engine
Mounting
Eicher HCV
1A-205016



SHBC-709
Rear hanger 8 Hole
Eicher Jumbo 20.16
IA207012



SHBC-719
R/S Front Helper Bracket
Eicher Jumbo 20.16
IA207010



SHBC-559
Bracket Gear Box
Mounting
Eicher HCV
1A 205



SHBC-709
Eicher Jumbo 20.16
R/S Rear Hanger 8 Hole
IA207012



SHBC-720
R/S Rear Helper
Bracket
Eicher Jumbo 20.16
IA207011



SHBC-561
Front Spring Rear
Bracket
Eicher E-11.10
IA207960



SHBC-711
Rear Spring Bracket
(4 Hole)
Eicher E-11.10
IA202032



SHBC-831
Centre Bracket Double Pin
Eicher Galaxy 30.25/33.25
IA208339



SHBC-832
R/S Rear Bracket 35mm
Eicher Galaxy
30.25/33.25
IA208338



SHBC-837
Rear Spring Shackle
EICHER 11.10



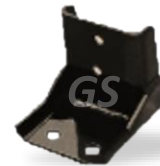
SHBF-1005
Front Spring Rear
Shackle
Eicher Canter



SHBC-833
Bell Crank Old Model
Eicher Galaxy
30.25/33.25
IA208341



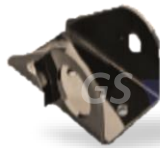
SHBF-1001
Front Spring Front
Hanger (LH)
Eicher Canter



SHBF-1006
Front Helper Bracket
Old Model
Eicher Canter



SHBC-834
R/S Shackle H Type
Eicher Galaxy
30.25/33.25
IA208343



SHBF-1002
Front Spring Front
Hanger (RH)
Eicher Canter



SHBF-1007
Rear Helper Bracket
Old Model
Eicher Canter



SHBC-835
F/S Rear Bracket
Eicher Galaxy
30.25/33.25,
Jumbo 20.16
IA201308



SHBF-1003
Front Spring Rear
Hanger
Eicher Canter



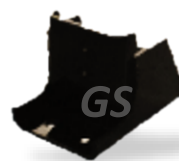
SHBF-1008
C Bearing Bracket with
Patti Complete
Eicher Canter



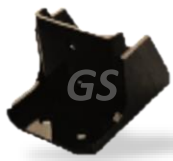
SHBC-836
Rear Spring Shackle
Eicher Jumbo 20.16
IA203882



SHBF-1004
Rear Spring Rear
Hanger
Eicher Canter



SHBF-1009
Rear Helper Bracket
N/M (LH)
Eicher Canter



SHBF-1010
Rear Helper Bracket
N/M (RH)
Eicher Canter



NPN-2068
Helper Bracket
Eicher Pro



NPN-2073
Rear Spring Shackle
Eicher E-11.10



SHBF-1105
Front Spring Rear
Hanger (LH)
Eicher Canter



NPN-2069
Rear Spring Hanger 6
Hole
Eicher



NPN-2074
Front Helper Bracket
Eicher E-11.10



NPN-2065
R/S Rear Bracket 42mm
Eicher Galaxy
30.25/33.25
IA208340



NPN-2070
Rear Hanger 8 Hole
Eicher E-2 Plus



NPN-2075
Rear Helper Bracket
Eicher E-11.10



NPN-2066
Rear Shackle 30mm
Eicher Jumbo 20.16
IA201310



NPN-2071
Front Hanger Steel
Eicher E-2 Plus



NPN-2076
Bell Crank New Model
Eicher Galaxy



NPN-2067
Rear Shackle 25mm
Eicher Jumbo 20.16
IA21309



NPN-2072
Rear Helper Bracket
Eicher E-2 Plus



NPN-2077
Double Pin Hanger
Eicher Terra 25
Eicher Terra



NPN-2078
R/S Rear Bracket 6
Hole 30mm New
Eicher Jumbo 20.16



NPN-2081
Front Spring Rear
Hanger
Eicher Pro
3074395



NPN-2084
Rear Spg. Hanger
Eicher Pro 30.15
IC 308060



NPN-2079
R/S Rear Bracket 6
Hole 35mm New
Eicher Pro



NPN-2082
Front Hanger
Eicher Pro



NPN-2085
Front Helper Bracket
Eicher E-2 Plus



NPN-2080
Front Spring Shackle
Eicher Pro 6025T
IC 334595



NPN-2083
Front Spring Front
Bracket 30mm
Eicher Galaxy 2016
Model



NPN-2086
F/S Rear Bracket
Eicher Pro 30.15
IC 317322

GS

GS

GS

GS

GS

GS